

1) Ultrasonic transducer axis, 2) Exit direction 90° connector, 3) LED function indicator, 4) Output function



Basic features

Application	Distance measurement
Approval/Conformity	cULus CE WEEE UKCA
Operating mode	Analog measurement (output curve)
Series	M18M1

Display/Operation

Adjuster	no
Display	LED green: Power Object in range - LED yellow

Electrical connection

Connection	M12x1-Male, 5-pin
Polarity reversal protected	yes

Electrical data

Current draw max.	40 mA
Input function	Output curve rising/falling Teach in the working range Factory setting (Reset) Synchronization on/off Synchronization signal
Load resistance RL max. (Analog I)	500 Ohm at UB > 20 V 100 Ohm at UB < 20 V
Operating voltage Ub	10...30 VDC
Rated operating voltage Ue DC	24 V
Synchronization	internal, max. 10 sensors
Ultrasonic Frequency	200 kHz

Environmental conditions

Ambient temperature	-25...70 °C
IP rating	IP67
Storage temperature	-40...85 °C

Functional safety

MTTF (40 °C)	1134 a
---------------------	--------

Interface

Analog output	Analog, current 4...20 mA
Output characteristic	linear rising/falling

Ultrasonic Sensors
BUS M18M1-XB-12/100-S92G
Order Code: BUS004M



Material

Housing material	Brass, nickel-plated PBT
Material sensing surface	PU foam/Epoxy resin/Glass
Surface protection	nickel-plated

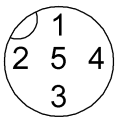
Range/Distance

Measuring range	120...1300 mm
Rated operating distance S_n	1000 mm
Repeat accuracy	$\pm 0.15\%$ FS
Resolution	≤ 0.069 mm

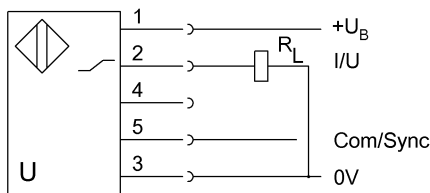
Mechanical data

Dimension	$\varnothing 18 \times 52.5$ mm
Mounting part	Nut M18x1

Connector Drawings



Wiring Diagrams



Technical Drawings

